



FABBRICA CAVI - ANTENNE - ACCESSORI TV

RG 58 CU-ZH

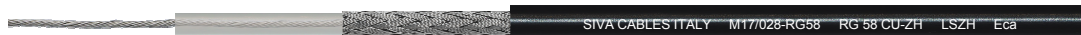
50 OHM RF COAXIAL CABLE

MANUFACTURED IN COMPLIANCE WITH MIL-C-17F STANDARDS

COMPLIANCE IEC 60754-1 IEC 60754-2 IEC 61034-2

Class CPR **E_{ca}**

CS PE CS Pet LSZH
19 x 0,18 mm ø 2,95 mm ø 3,50 mm h. 16 mm ø 5,00 mm



 | A | B | C | D | E |

MECHANICAL DATA

A	INNER CONDUCTOR	TINNED COPPER	19 x 0,18 mm
B	DIELECTRIC	LOW DENSITY POLYETHYLENE	ø 2,95 ± 0,10 mm
C	BRAID	TINNED COPPER	112 x 0,13 mm
		- COVERAGE	95%
D	NON-MIGRATING	POLYESTER TAPE	h. 16 mm
E	SHEATH	FLAME RETARDANT NON-CORROSIVE		ø 5,00 ± 0,10 mm
		THERMOPLASTIC FREE OF HALOGENS		
	- COLOUR	BLACK - RAL 9004		
	- PRINTING	M17/28-RG058 MIL-C-17G RG 58 CU-ZH 50 Ohm LSZH		
		MADE IN ITALY CE 56 WEEK/YEAR EN 50575:2014 + A1:2016 Eca		

MINIMUM BENDING RADIUS (mm)

- SINGLE ø EXTERNAL X 5
- REPEATED ø EXTERNAL X 10

TEMPERATURE RANGE -40 °C / +80 °C

CABLE WEIGHT (Kg/Km)

- COPPER 18,7
- PLASTIC 21,7
- TOTAL 40,7

ELECTRICAL PROPERTIES at 20°C

IMPEDANCE 50 ± 2 Ohm

CAPACITANCE 100 pF/m

VELOCITY RATIO 66%

RESISTANCE

- INNER CONDUCT. 36,5 Ohm/Km
- BRAID 14 Ohm/Km

TENSION

- SHEATH 4,0 kV
- SPARK TESTING

ATTENUATIONS dB/100 m.

		dB	W
5	MHz	2,9	849
10	MHz	4,3	600
30	MHz	7,9	346
50	MHz	10,2	268
150	MHz	18,2	155
220	MHz	22,2	128

MAX. POWER RATING W

		dB	W
450	MHz	33,0	89
600	MHz	38,9	77
800	MHz	45,8	67
900	MHz	48,9	63
1000	MHz	52,4	60
1500	MHz	67,0	49

		dB	W
1800	MHz	74,7	44
2000	MHz	79,8	43
2500	MHz	96,6	38
3000	MHz	111,0	35
5200	MHz	175,3	26
5800	MHz	191,7	25

STRUCTURAL RETURN LOSS dB

30 ÷ 450	MHz	>27	2000 ÷ 3000	MHz	>18
450 ÷ 1000	MHz	>25	3000 ÷ 4000	MHz	>15
1000 ÷ 2000	MHz	>20	4000 ÷ 5800	MHz	>11

SCREENING EFFECTIVENESS dB

100 ÷ 900	MHz	>57
900 ÷ 2000	MHz	
2000 ÷ 3000	MHz	

The producer reserves himself to make modification on the item without any notice.